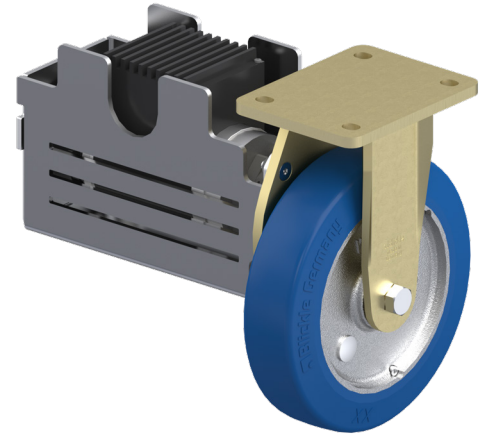


More simple. More smooth. More efficient.

The Electric Drive System ErgoMove® 2000P.

With the ErgoMove® 2000P electric drive system, existing as well as newly designed transport equipment, machines and systems can be equipped with **electric drive, steering and braking support** via **plug & play**. With the aid of the ErgoMove® 2000P, it is possible to move loads up to **2,000 kg** in an **ergonomically optimal, safe and intuitive** way.

The modular sets include **two fixed castors with electric drive**, cockpit solutions with integrated control and battery unit as well as all relevant safety devices (emergency stop, horn, dead man's brake systems, anti-trap protection, etc.). By means of commercially available exchangeable batteries, the operational readiness of the systems is guaranteed at all times - even in 24/7 use.



Technical characteristics:

Wheel-Ø:	200 mm
Wheel width:	50 mm
Total height:	245 mm
Plate size:	140 x 110 mm
Bolt hole spacing:	105 x 75–80 mm
Moto protrusion (Ü):	208 mm
Motor protrusion gearbox 90° version (Ü):	113mm
Max. total load of the application:	2,000 kg

Bracket:

- Particularly robust welded steel construction, zinc-plated, yellow passivated, Cr6-free

Wheel tread:

- High-quality polyurethane-elastomer Blickle Besthane® Soft, hardness 75 Shore A
- Outstanding operational comfort thanks to particularly thick, elastic tread
- Excellent floor preservation, low-noise operation
- High abrasion resistance, non-staining

Wheel centre:

- Made from rugged grey cast iron, lacquered, colour silver with grease nipple

Drive:

- Brushless DC motor with integrated electro-mechanical brake system (dead man function) with emergency release on every fixed castor
- Thrust force max. 60 daN per motor used

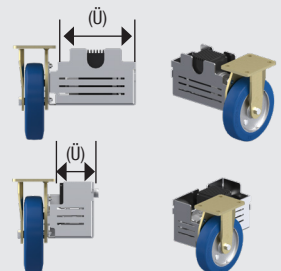
Order numbers:

- SET EM2000P-GBS 200K-ET-2FG (Cockpit with rotary joysticks)
- SET EM2000P-GBS 200K-ET-EG (Ergonomics cockpit)
- SET EM2000P-GBS 200K-ET-2FG-90 (Cockpit with rotary joysticks, 90° gearbox version)
- SET EM2000P-GBS 200K-ET-EG-90 (Cockpit with rotary joysticks, 90° gearbox version)

Modular set components ErgoMove® 2000P

1

Left and right fixed castor with a thrust force of max. 60 daN per motor
Alternative: version with angular gear in 90° design, for a confined installation space (narrow trolley frame)



2

Cockpit with power sensor
Cockpit with rotary joysticks



Optional accessories

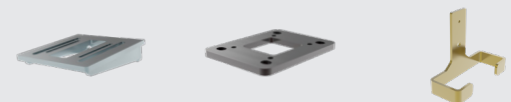
3



4



5

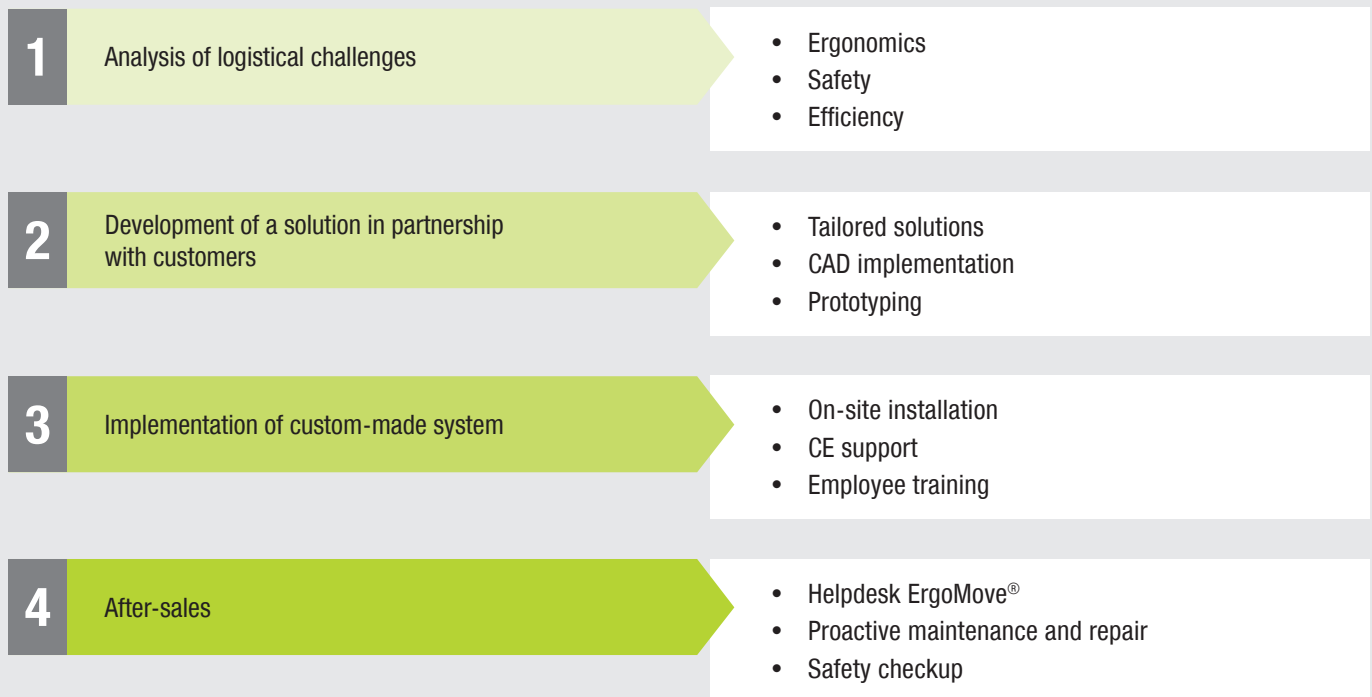


“Our vision is to create the most ergonomic and safe e-mobility solutions for every working person.”

Blickle’s electric drive systems and ergonomic e-mobility solutions marketed under the ErgoMove® brand provide a safe and easy way to transport loads up to 4,000 kilograms in a variety of sectors. The experts at ErgoMove® work closely together with customers to develop solutions which are tailored to their specific requirements.

Blickle’s effective service team provides around the clock support for users before and after they start using the ErgoMove® system.

As a reliable partner, Blickle provides a comprehensive range of logistical services to complement ErgoMove®’s e-mobility solutions:



The EM500, EM1000, EM2000 and EM4000 lines of the Blickle ErgoMove® system can be used to create custom-made solutions capable of handling loads of up to four tons.

To find out more, please contact your Blickle ErgoMove® specialists:

Email: ErgoMove@blickle.com



To find out more about ErgoMove® systems, please visit www.blickle.com/ErgoMove