



Simple. Gentle. More economical.

The electric drive system ErgoMove®

With the ErgoMove® brand of electric drive systems, transport equipment, machines and devices with loads of up to 4,000 kilograms can be moved safely and economical by hand. The modular systems include two fixed castors with electric drive, cockpit solutions with integrated controls and a battery unit as well as all relevant safety features. New and existing applications can easily being upgraded with steering and brake assistance.

Particularly in the area of pharmaceutical production, the electric drive systems offer 24/7 operation possibilities along with highest loads, optimum protection of employees and transported goods, accident prevention and improved working ergonomics. Whether measuring systems, mobile vessels, mobile filling systems or applications under cleanroom-like conditions – the modular drive systems allow individual solutions for every application.



Technical data (see EM 4000):

Wheel-Ø:	250 mm
Wheel width:	80 mm
Installation height:	305 mm (optional up to min. 265 mm)
Protection class:	IP 44 (optional IP 65)
Load capacity:	4,000 kg

Drive:

- Brushless DC motor with integrated electromechanical parking brake (dead man's function) with emergency release on each fixed castor
- Thrust force max. 110 daN per motor used

Drive castor bracket:

- Particularly robust welded steel construction, electrogalvanised, yellow passivated, Cr6-free
- Optionally with zinc-nickel coating for even higher corrosion protection

Wheel :

- High-quality polyurethane elastomer Blickle Besthane® Soft
- Hardness 75 Shore A
- Very high ride comfort due to particularly thick, elastic running surface
- Very gentle on the ground, quiet running
- Very abrasion-resistant, non-marking, contact discolouration-free
- Hydrolysis-stable

Wheel body:

- Made of robust grey cast iron, lacquered, colour silver
- Grease nipple
- Optionally with stainless steel deep groove ball bearings and additional corrosion protection on the wheel body

Modular set components ErgoMove 4000

1

Left and right fixed castor with a thrust force of max. 110 daN per motor.



2

The set consists of the cockpit with two handles and two rotary joysticks.



3

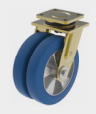
The set contains the control box with battery unit is included. This can be positioned anywhere on the trolley and can be different corrosion-resistant materials.



Optional features

4

Compatible swivel castors are available.



5

Remote control concepts are individually available.



6

External battery unit is available.

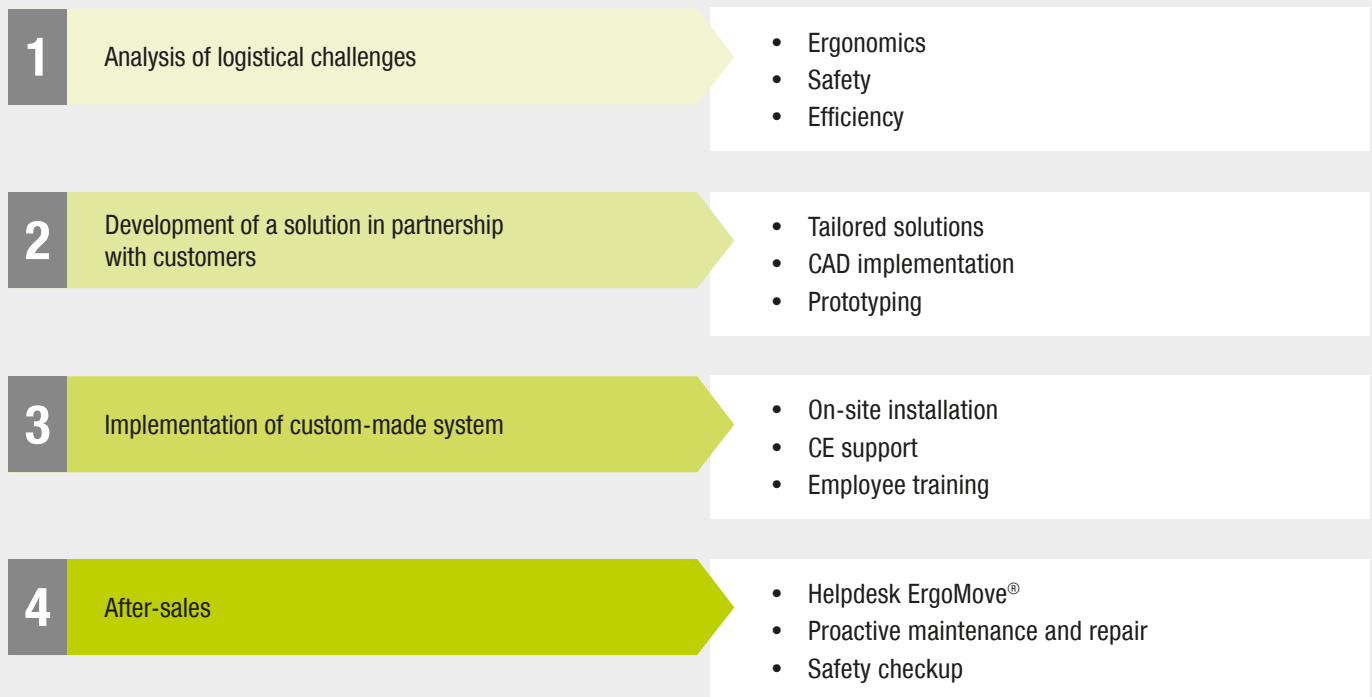


“Our vision is to create the most ergonomic and safe e-mobility solutions for every working person.”

Blickle’s electric drive systems and ergonomic e-mobility solutions marketed under the ErgoMove® brand provide a safe and easy way to transport loads up to 4,000 kilograms in a variety of sectors. The experts at ErgoMove® work closely together with customers to develop solutions which are tailored to their specific requirements.

Blickle’s effective service team provides around the clock support for users before and after they start using the ErgoMove® system.

As a reliable partner, Blickle provides a comprehensive range of logistical services to complement ErgoMove®’s e-mobility solutions:



The EM500, EM1000, EM2000 and EM4000 lines of the Blickle ErgoMove® system can be used to create custom-made solutions capable of handling loads of up to four tons.

To find out more, please contact your Blickle ErgoMove® specialists:

Email: ErgoMove@blickle.com



To find out more about ErgoMove® systems, please visit www.blickle.com/ErgoMove